

W
GLENDINING & Co.

LIMITED

7 Blenheim Street, New Bond Street,
London, W.1.

Phone MAYFAIR 0416

Catalogue of
**GREEK, ROMAN, ENGLISH
AND SCOTTISH COINS**

Formed by the Late V. J. E. RYAN, Esq.

THIRD PART
Ancient Greek Coins

DAY OF SALE:

FRIDAY, NOV. 24th, 1950

Commencing at 1 p.m., precisely.

ON VIEW Day prior and Morning of Sale.

PRICED CATALOGUE TWO SHILLINGS AND SIXPENCE

CONDITIONS OF SALE.

FIRST.—The highest bidder to be the buyer; and if any dispute arise between two or more bidders, the lot so in dispute shall be immediately put up again and resold, provided the auctioneer cannot decide the said dispute.

SECOND.—No person to advance less than 1s.; above five pounds 5s.; and so on in proportion.

THIRD.—All lots are put up for sale subject (a) to any reserve price imposed by the seller and (b) to the right of the seller to bid either personally or else by any one person who may be the Auctioneer.

FOURTH.—The purchasers to give in their names and places of abode, and to pay down 5s. in the pound, or more in part of payment, or the whole of the purchase-money, *if required*; in default of which the lot or lots so purchased to be immediately put up again and resold.

FIFTH.—Each lot is believed to be genuine, but should any lot prove to be a forgery, or reprint, or wrongly described in the catalogue, the purchaser is at liberty to take or reject it, provided always that notice of such rejection be made and the lot returned within seven days from date of sale.

SIXTH.—The Auctioneers will not hold themselves responsible for any action that may arise, acting solely as agents between buyer and seller and for both equitably.

The Auctioneers do not hold themselves responsible for the safe custody of any lots left more than three days after the date of Sale.

Please Note.

The metal in which the coins are struck is indicated thus:—

A = gold, *R* = silver, *Æ* = copper or bronze.

El = Electrum (an alloy of gold and silver).

Bl = Billon (an alloy of silver and copper).

Care is taken to describe accurately the condition of coins and medals, using the following scale: *Extremely fine, Very fine, Fine, and Good*. Where no condition is stated it may be assumed that the coins and medals are not in good condition.

Catalogue of
the Important Collection of
Greek, Roman, English
and Scottish Coins

Formed by the Late
V. J. E. RYAN, Esq.

Third Part
Ancient Greek Coins

MESSRS. GLENDING & Co. LTD.
7 BLENHEIM STREET
LONDON W.1

1950

THIRD PART

CATALOGUE

OF

ANCIENT GREEK COINS

Formed by the late V. J. E. Ryan, Esq.

Day of Sale:

Friday, November 24th, 1950

LOT

- | | | | | | |
|-------|--|----|----|---|---|
| 1378* | ITALY. CAMPANIA. Cales, B.C. 280-268, Didrachm, head of Athena r. in crested Corinthian helmet, <i>rev.</i> [C]ALEN[O], Nike driving biga to l. <i>Very fine, widespread and good style.</i> | 10 | 10 | 0 | 1 |
| 1379 | CAPUA. ROMANO-CAMPANIA. B.C. 335-312. Didrachm, head of Mars bearded to l.; behind, oak-leaves and acorn; <i>rev.</i> ROMANO, bust of horse r.; behind it, a corn-ear, <i>very good.</i> ROMANO, head of Apollo with long hair, laur., to l; <i>rev.</i> free horse galloping r.; above, star, <i>very fine.</i> | 8 | 5 | 0 | 2 |
| 1380 | Same Period. Head of young Herakles r., club at neck; <i>rev.</i> ROMANO, wolf and twins, <i>very fine.</i> B.C. 312-286. Head of Roma in Phrygian helmet to r.; behind, sword in scabbard; <i>rev.</i> ROMANO, Victory with palm and wreath; in front ΩΩ, <i>ex Lugano Sale, 1923, very fine.</i> | 10 | 10 | 0 | 2 |
| 1381* | B.C. 312-286. Head of Mars r., beardless; <i>rev.</i> ROMA, bust of horse r.; behind, sickle. <i>Ex Lucerne Sale XII, lot 88, very fine.</i> | 7 | 15 | 0 | 1 |

LOT

- 7 10 0 1382* Same Period. Similar, but behind head, club; *rev.* ROMA, free horse galloping r.; above, club. *Ex Lucerne Sale V, lot 142, very fine.* 1
- 10 0 0 1383* Same Period. Head of Apollo with long hair, r., laur.; *rev.* ROMA, free horse prancing l. *Ex Lucerne Sale XII, lot 86, very fine.* 1
- 2 0 0 1384 B.C. 286-268. *Obv.* young Janiform head; *rev.* ROMA (incuse), Jupiter driven by Victory. *Very fine and widespread.* 1
- 3 10 0 1385 Various bronze. *Mostly fine, a few very fine.* 18
- 7 10 0 1386* HYRIA. B.C. 400-335. Didrachm, head of Athena in crested Athenian helmet to r.; *rev.* man-headed bull to r., mixed Greek and Oscan inscription above; overstruck, portions of under-types showing. *Very fine; ex Lugano Sale, April 1927, lot 105.* 1
- 9 0 0 1387 Another. *Obv.* type to l., B.M.C. 1, S. 779c, 114.8 grs., *ex Lucerne Sale XII, lot 104, very fine.* Another, head of Hera Argoia or Lakinia to front; *rev.* similar, *very rare but somewhat rubbed, especially on obv.* 2
- 13 0 0 1388* NEAPOLIS. Circ. B.C. 405. Didrachm, head of nymph nearly facing (inclined to r.), diad.; *rev.* man-headed bull to l., inscr. partly above and partly below, B.M.C. 11, S. 335. *Ex Sambon Sale, June 1927, lot 50. Very rare, but only very good state.* 1
- 4 5 0 1389 Didrachms of usual type, B.C. 450-340 and 340-241. Head of nymph to r.; *rev.* Nike crowning man-headed bull to r., usual inscr. in ex., varying symbols and letters; B.M.C. 27, 32, 34 (*rev.* type to 1), 81 var., S. 448. *Very good to fine, one probably plated.* 5
- 38 0 0 1390* B.C. 300-241. Didrachm, head of nymph to l.; behind, oinochoe to l.; border of dots; *rev.* NEOΠΟΛΙΤΩΝ, man-headed bull to r., head facing, crowned by Nike; beneath bull, BI; B.M.C. 105, S.497, 112.6 grs., 7.30 grms. *Ex Bompois Collection, lot 65; Sir H. Weber, No. 339 and Sir W. Ridgeway. A superb specimen, sharp, toned, and on an exceptionally large flan.* 1

LOT

- | | | | | | |
|-------|--|----|----|---|----|
| 1391 | PHISTELIA. B.C. 380-350. Didrachm, head of nymph facing, hair loose; <i>rev.</i> man-headed bull walking to l.; above, Oscan inscr.; in ex., dolphin swimming to l.; B.M.C. 2, <i>fine, ex Vicomte Baudouin de Jonghe Collection, scarce and fine.</i> And two Obols of different types, <i>both very fine.</i> | 7 | 15 | 0 | 3 |
| 1392* | SUESSA. B.C. 280-268. Didrachm, head of Apollo to l.; behind, ear of corn with leaf; <i>rev.</i> horseman (desultor), naked, wearing pilos, leading a second horse to l.; he holds in l. hand lemniskos; in ex. ΣVEΣANO; B.M.C. 8, S. 856. <i>Ex Sir H. Weber Collection and Bement, Lucerne Sale VI, lot 63. 100.5 grs., 6.51 grms. Very fine.</i> | 15 | 0 | 0 | 1 |
| 1393* | TEANUM SIDICINUM. B.C. 280-268. Didrachm, head of young Herakles to r., wearing lion's skin, the paws tied beneath chin; behind, heron standing to l.; <i>rev.</i> TIANUD in Oscan characters: Nike in triga to l., holding whip and reins; horses cantering; B.M.C. 4. <i>Obv. very fine, the rev. a shade weakly struck and a little corrosion pitting. Ex Bull Sale, Sotheby's, May 1929.</i> | 28 | 0 | 0 | 1 |
| 1394 | Bronze of Larinum, Cales, Neapolis, Teanum, Teate and Venusia. <i>Mostly fine.</i> | 4 | 0 | 0 | 12 |
| 1395* | CALABRIA. TARENTUM. Before B.C. 520. Didrachm, T A R A Σ (retro.), Taras astride dolphin to r.; beneath, cockle-shell; cable border; <i>rev.</i> wheel of four spokes; B.M.C. 35. <i>Ex Ravel Sale 1929. Very fine and unusually sharp, but a little ill-struck.</i> | 10 | 0 | 0 | 1 |
| 1396* | Before B.C. 500. Didrachm, TARAS, Taras on dolphin to r., holding cuttle-fish; <i>rev.</i> same inscr., but retro., Hippocamp r.; beneath, cockle-shell. Ev. Pl. I, 4. 125 grs., 8.1 grms. <i>Ex Munich Sale, Mar. 1928, lot 24. Very fine.</i> | 13 | 0 | 0 | 1 |
| 1397* | B.C. 473-460. Didrachm, TARAS (retro.), Taras on dolphin to r., arms outstretched; beneath, cockle-shell, border of dots; <i>rev.</i> TARAS, Phalantos seated to l. holding distaff which ends under l. armpit. <i>Ex Ravel Sale, Spring 1929. Fine.</i> | 6 | 0 | 0 | 1 |
| 1398 | B.C. 450-430. Didrachm, naked horseman with whip, gallop to l.; <i>rev.</i> traces of inscr.; Taras on dolphin to r.; beneath, scallop-shell. Ev. I, A.2. <i>Rare, obv. fine, rev. blurred in striking.</i> | 3 | 0 | 0 | 1 |

LOT

- 3 10 0 1399 Period II, B.C. 420-380. Didrachm, Ev. II, C.1, *rare, but only good state*. Period III, B.C. 380-345. Didrachm, Ev. III, B.1, *fine and good style, ex Lugano Sale, April 1927*. Another, Ev. III, C.3, var., *rare, very good*. Another; Ev. III, L.1, *good*. 4
- 2 10 0 1400 Period IV, B.C. 344-334. Didrachm, Ev. IV, D.1, *rare, but only good state*. Period V, B.C. 334-302, Ev. V, B.2 var., *rare, fine*. Another, Ev. V, B.5, *fine and sharp, but obv. off-centre*. 3
- 2 10 0 1401 Period VI, B.C. 302-281. Didrachm, Ev. VI, A.1, *fine*. Another, Ev. VI, D.2, *fine, but obv. blurred in striking*. Two Campano-Tarentine Didrachms of usual types, one with obverse type to l. and cornucopiae, dolphin and TA on *rev.*, *fine*; the other plated, with copper core very apparent, *very good*. 4
- 8 5 0 1402 Period VII, B.C. 281-272. Didrachm, Ev. VII, A.1, *very fine and sharp*, except that the head of Taras off the flan. Another, Ev. VII, A.2, *very fine*. Another, Ev. VII, A.4, *ex Lugano Sale, April 1927, lot 167, very fine*. 3
- 8 10 0 1403 Same Period. Didrachm, Ev. VII, B.1, *rare var. with ΔI, fine*. Another, Ev. VII, C.3, *very fine but rev. somewhat off-centre*. Another, Ev. VII, C.4, *fine, but weakly struck on the bodies, rare*. Another, Ev. VII, D.1, *rare, but barely fine*. 4
- 5 10 0 1404 Same Period. Didrachm, Ev. VII, F.1, *very fine*. Another, Ev. VII, G.1, *very fine but a trifle corroded*. Drachm, head of Athena to r., wearing crested Athenian helmet, adorned with Skylla hurling stone; *rev.* owl, with closed wings, standing r. on olive-spray; in field to l., TAP; in field to r. Π, *very fine and a very rare variety*. Another, *obv.* type, to l.; *rev.* owl has open wings and stands on fulmen slightly towards r.; in field to r., ΣΩ; in ex., Δ I, *fine, but somewhat off-centre*. 4
- 9 10 0 1405 Period VIII, B.C. 272-235. Didrachm, Ev. VIII, A.9, *very fine, sharp; ex Lugano Sale, April 1927, lot 155*. Another, Ev. VIII, A.11, *very fine, clear, but a trifle rubbed*. Another, Ev. VIII, D.1, *fine, but obv. off-centre*. Another, Ev. VIII, H.1, *fine*. Another, Ev. VIII, L.2, *rare and fine*. 5

Lot				
1406	Period IX, B.C. 235-238. Diobol, <i>obv.</i> head of Athena facing wearing triple-crested helmet; <i>rev.</i> Herakles standing facing contending with lion; between the legs, mono. \mathcal{P} ; in front to l., club and Amazonian shield, <i>rare, and very fine for the coin, ex Lugano Sale, April 1927, lot 181.</i> Period X, B.C. 212-209. Didrachm of reduced weight; <i>obv.</i> $\Sigma\Omega\text{KANNA}\Sigma$, horseman to r. wearing cuirass, holding palm and lemniscata; <i>rev.</i> $\text{TAPA}\Sigma$, Taras astride dolphin to l., trident in l. hand, with r. extending kantharos; in field, to r., eagle with spread wings, Ev. X, E.1, <i>rare and very fine, obv. a shade off-centre and a little corrosion, ex Sambon Sale, June 1927, lot 247.</i>		5	10 0
				2
1407	Drachms (2), Diobols (5), Obols, etc. (5). <i>Good to fine.</i>		12	5 10 0
1408	LUCANIA. HERACLEIA. B.C. 370-281. Didrachm, <i>obv.</i> head of Athena r., in crested Athenian helmet, adorned with Skylla hurling stone with r. hand; in front, K (?); <i>rev.</i> Herakles standing facing, holds club, bow and lion's-skin; Nike crowning him; in field, to l., AA ; in field, to r., Ξ (?); B.M.C. 30. <i>Ex Frankfort Sale, May 1929, lot 39. Rare and fine, but a shade small.</i>		4	10 0
				1
1409*	Same Period. Didrachm, <i>obv.</i> head of Athena, almost facing, three-quarters inclined to r., wearing triple-crested Phrygian helmet; <i>rev.</i> $\text{FHPAKA}\Lambda\text{H}$. . . , Herakles standing facing, strangling lion with left arm; cf. Jameson Cat., No. 236. <i>Very rare variety, fine, small chisel-cut on rev. by head of Herakles. Ex Lucerne Sale XVI, lot 132.</i>		11	0 0
				1
1410*	B.C. 320-281. Didrachm, head of Athena to r., wearing crested Corinthian helmet adorned with Skylla hurling stone; in front, $\text{FHPAKA}\Lambda\text{HI}\Omega\text{N}$; behind, K; <i>rev.</i> same inscr., Herakles standing facing, holds club, bow and arrow, lion's-skin draped over left arm; in field, to l., $\text{A}\odot\text{A}$ and vase with one handle; B.M.C. 35. <i>Ex Lucerne Sale XIII, lot 70. Extremely fine, sharp.</i>		17	10 0
				1
1411*	Same Period. Didrachm, head of Athena, nearly facing, inclined to r., wearing triple-crested Athenian helmet adorned with Skylla; to l., AP II between hair and crest; <i>rev.</i> same inscr. in field, to l.; similar type but Herakles as though walking; no arrow; in front to r., AEON ; FA below; cf. Grose 114.853. <i>Ex Frankfort Sale, May 1929, lot 40. Fine, but weakly struck, especially the reverse, rare.</i>		6	15 0
				1

LOT

- 4 0 0 1412 Period B.C. 281-268. Didrachm of the Roman six-scruple standard, head of Athena r., wearing crested Corinthian helmet; above, AΛE; to l., between head and crest, EY; beneath, I . ; *rev.* ἩΡΑΚΛΗΙΩ . . . , Herakles standing facing, with club, bow and lion-skin; in field, to l., owl flying r.; B.M.C. 39, *very fine, but reverse rather off-centre.* Diobol of previous Period, *very good.* 2
- 66 0 0 1413* METAPONTUM. B.C. 470-400. Stater, META, ear of barley; *rev.* METAII, five grains of barley forming a star, the centre of which is a pellet, the letters of the inscr. being separated by the grains. Noe 'The Coinage of Metapontum', Part II, Amer. Num. Soc. Mono. 1931, No. 310. *Extremely rare and fine, the obv. a trifle scraped.* 1
- 10 10 0 1414* Same Period. Similar, but locust to r., head upwards; *rev.* Apollo, naked, standing to l., holding laurel tree and bow; in front, altar, upon which the lower end of the branch rests. Noe 319. *Ex Lucerne Sale XII, lot 395. Very rare, but only good state, being pitted and scraped.* 1
- 9 10 0 1415 B.C. 400-350. Stater, head of female to r., wearing sphenone and a thick veil over the back of the head; *rev.* usual type; mag's name and part of inscr. off the flan. Noe 322. *Ex Lucerne Sale XIII, lot 76. Female head to l., with fillet tied in a bow at the back, wearing necklace and pendant; rev. usual type, leaf to l. Noe 328. Rare and fine.* 2
- 50 0 0 1416* Stater, male head to r., with ram's horn and ear, wearing olive-wreath (? Apollo Karneios); *rev.* usual type. Noe 337. *Ex Lugano Sale, April 1927, lot 205. Fine, good style and rare.* 1
- 40 0 0 1417* — Youthful female head to r. (Kore), bound with double fillet, crossed, wearing ear-ring; B.M.C. 66; Noe 385. *Very fine, nice style. Ex Sir Wm. Ridgeway Collection.* 1
- 36 0 0 1418* — Female head to r., hair in waved rolls beneath fillet, a loose strand hanging behind; *rev.* META, ear of barley with leaf to l.; above leaf, an alighting bird to r.; Noe 407a. *Ex Sambon Sale, June 1927, lot 312. Very fine.* 1
- 2 5 0 1419 — Female head (Kore) to l., wearing ampyx, earring and necklace, the hair gathered in a roll at the back; *rev.* usual type, with inscr. to r., leaf to l. *Ex Sambon Sale, June 1927, lot 311; Noe 433. Very good.* 1

Lot		
1420*	— Head of young Dionysus to l. with hair falling in tresses, and wearing a broad diadem decorated with a meander pattern and a row of ivy leaves above; beneath, ΣΠ; <i>rev.</i> META, upwards to l.; ear of barley with awns widely spaced; leaf to r; Noe 458. <i>Extremely fine.</i>	54 0 0 1
1421*	— Head of Apollo to r., laur., hair long; beneath, on trunc., ΑΙΙΟΛ; beneath that, Σ (trace only); in front of neck, uncer. letter; <i>rev.</i> usual type, the first letter of inscr. off the flan; Noe 462. <i>Very fine, the obv. weakly struck as usual.</i>	12 0 0 1
1422*	— Female head to l., wearing necklace; the hair in thick braid encircling the head; behind, ΣΤ; in front of neck and chin, traces of other letters, but possibly from overstriking, as the <i>rev.</i> also bears signs of an under-type; Noe 475 variety (?). <i>Ex Helbing Sale, Munich, April 1927, lot 1562. Very fine.</i>	12 0 0 1
1423	— Female head to r., the hair bound with fillet four times, leaving top-knot at the back; border of dots; <i>rev.</i> META-ΠΟΝΤΙΟΝ, ear of barley, leaf to r., upon which, conventionalized lily (lotus ?); Noe 481; <i>ex Lugano Sale, April 1927, lot 208; fine, but field of obv. and rev. scraped and burnished.</i> Another, female head to r., wearing earring, the hair at back bound by net; <i>rev.</i> leaf to r.; above, ΛΥ; Noe 496, <i>fine.</i>	11 0 0 2
1424*	— Female head to r. with broad fillet or ampyx, which is visible over the hair-mass at the back; <i>rev.</i> ME (only); traces of an obliterated M precede the inscr., also, traces of an obliterated symbol, or letters, above the leaf; both obliterations made to the die before striking; a mule of Noe 501 and 502. <i>The obv. very fine, a shade weakly struck, and a little corrosion; the rev. extremely fine; an interesting piece.</i>	8 0 0 1
1425*	— Female head to r., wearing necklace and single pendant earring, the hair bound with a sphendone or sakkos; behind neck, a retrograde K; <i>rev.</i> usual type; leaf to l., above it, a conical helmet; Noe 513. <i>Ex Helbing Sale, Munich Nov. 1928, lot 3655. Interesting traces of overstriking. Very fine.</i>	29 0 0 1
1426*	— ΕΛΕΥ●ΕΠΙΟΣ (traces around border of field to r.), head of Zeus, laur., with long hair, to r.; <i>rev.</i> META to r.; ear of barley with leaf to l.; above leaf, squatting Seilene; beneath leaf, Δ; B.M.C. 88 (incorrectly described); cf. Lloyd 373. <i>Very fine, sharp, a little corrosion both sides, rare.</i>	26 0 0 1

LOT

- 20 0 0 1427* B.C. 350-330. Tetradrachm, or distater; head of Leukippos, r., bearded, wearing Corinthian helmet, on which, Nike, in fast quadriga, and, above hinge, sea-horse, with curled wing; behind, half of running lion r., in front of which, ΑΠΗ; border of dots; *rev.* ΜΕΤΑΠΟΝΤΙΝΩΝ, ear of barley, with leaf to l., above which, club, and beneath, ΑΜΙ; B.M.C. 75. *Fine and rare.* 1
- 32 0 0 1428* Stater of same period. Same head, helmet plain; in front, Α (the top letter only is showing); behind, lion's head, r., tongue protruding; *rev.* ΜΕΤΑ, same type; B.M.C. 76. *Ex Bement, lot 177; Helbing, 1927, lot 38; and Ravel Colls. 121.1 grs.; 7.85 grms. A superb specimen.* 1
- 12 10 0 1429* — ΛΕΥΚΙΠΠΟΣ, same type; behind, dog seated to l.; beneath, Σ (?); *rev.* same inscr. to l.; same type, but leaf to r.; on it, dove r., wings open (alighting); beneath, ΑΜΙ.; B.M.C. 79. *Ex Lucerne Sale XIII, lot 86. Very fine.* 1
- 20 0 0 1430* B.C. 330-300. Stater, head of Persephone to l., hair rolled behind, wearing wreath of barley with ears, earring and necklace; border of dots; *rev.* ΜΕΤΑ, ear of barley with leaf to r.; in field, to l., caduceus, and between it and ear, ΔΥ; B.M.C. 118. *Widespread and very fine.* 1
- 2 15 0 1431 — Head of Persephone r., with long hair, wearing wreath of barley with ears, earring and necklace; in front of neck, ΔΑ; *rev.* usual type; inscr. to l.; leaf to r.; above it, plough; beneath, Μ (inverted) [ΑΧ]; B.M.C. 96 var. *Ex Lewis Collection. Fine.* 1
- 10 0 0 1432* — Same type, but to left; *rev.* usual type; inscr. to r.; leaf to l.; above it, tongs; beneath, Α⊙Α; B.M.C. 106. *Extremely fine and sharp.* 1
- 10 0 0 1433* — Head of Persephone, full-face, inclined towards r., wearing stephane, ornamented in front with honeysuckle, wreath of barley with ears, earrings, and necklace; *rev.* same, but inscr. to l., leaf to r., above it, bucranium; beneath, Α[⊙Α]; B.M.C. 117. *Rare and almost very fine, but a plated flan.* 1

Lot

- 1434* ——— Head of Demeter r., bound with wreath of barley, with ears; wearing earring and necklace; on back of head, transparent veil; in front, uncer. letters; *rev.* META upwards to r.; usual type; leaf to l.; on leaf field-mouse to l.; beneath it, Φ; B.M.C. 122. *Very fine, the rev. especially sharp.* 1 8 10 0
- 1435* B.C. 212-207. Half Stater, or Drachm, head of Athena to r., with long hair, wearing crested Corinthian helmet; *rev.* META downwards to l.; ear of Barley with leaf to r.; alighting upon the top of leaf, an owl with spread wings. Car. Pl. IXL, 132; Hunter Cat., I, Pl. VI, 25; cf. *Bement, Luc. Sale VI, lot 200. Extremely fine and rare, but a fine striking-crack from edge to centre of flan.* 1 9 5 0
- 1436 Same Period. Tetrobol, head of Athena to r. wearing crested Athenian helmet adorned with a wing; border of dots; *rev.* ear of barley, with leaf to r.; above it, club, downwards. *Ex Munich Sale, March 1928, lot 44. Extremely fine.* 1 4 5 0
- 1437 POSSEIDONIA. B.C. 470-400. Stater, ΠΟΜΕΣΣΑ, Poseidon, advancing r., wearing chlamys and wielding trident; *rev.* same inscr. but first two letters off the flan; bull walking to l.; beneath, cockle-shell; all in incuse circle; B.M.C. 34 var. *Very fine and good style, but the bull's head off the flan.* 1 4 15 0
- 1438 SYBARIS. Before B.C. 560. Stater, VM (in ex.); bull standing to l., head reverted, on dotted and linear bar; border of dots between two lines; *rev.* same type as *obv.*, incuse and reversed; incuse border of dots; B.M.C. 1., var. *Very fine, but has been heavily corroded.* B.C. 560-510, One-third Stater, similar, but inscr. MY. *Ex Lugano Sale, April 1927, lot 226. Fine.* 2 3 15 0
- 1439 THURIUM. B.C. 425-400. Stater, head of Athena to r., wearing crested Athenian helmet bound with olive; ●OYPIΩN, bull walking to r., head lowered; beneath, Δ; in ex. tunny-fish to l.; B.M.C. 10; *ex Lucerne Sale 1923, lot 545, fine.* Another, same type, but *rev.* type to l.; beneath, bull; bird r. with spread wings; B.M.C. 14, *fine.* 2 4 5 0
- 1440* B.C. 400-350. Distater, head of Athena to r., wearing crested Athenian helmet adorned with Skylla who raises left hand to her head; *rev.* ●OYPIΩ[N], bull rushing to r.; in ex. tunny-fish to r.; B.M.C. 26 var. *Ex Lucerne Sale 1926, lot 481. An interesting graffito in front of the forehead, viz ΔAP, apparently contemporary. Very fine, but a trifle burnished on the cheek; fine style.* 1 15 0 0

Lot

- 7 5 0 1441* Another, similar, but *obv.* type to 1; behind head, Δ ; Noe, Num. Notes and Mono. No. 71; No. D.4e; Lockett 489. *Ex Lugano Sale, April 1927, lot 230. Fine, a little small.* 1
- 13 10 0 1442* Same Period. Stater, *obv.* type to r.; Skylla holds oar in r. hand; *rev.* same type. *Ex Sambon Sale, June 1927, lot 392. Very fine and nice style.* 1
- 25 0 0 1443* Circ. B.C. 280. Stater, similar type to r., of coarser style; Skylla hurls stone with r. hand; on neck-flap of helmet, EY; *rev.* similar type to r.; final letter of inscr. off the flan; in ex. ΦA ; B.M.C. 95. *Ex Sambon Sale, June 1927, lot 411. Extremely fine.* 1
- 10 0 0 1444* B.C. 281-268. Stater, head of Apollo to r., laur., hair long; *rev.* inscr. in ex.; similar type to r.; above bull, AA; in ex., tripod; cf. Sir H. Weber, No. 901, and Bement 237. *Very fine and rare.* 1
- 6 0 0 1445 Same Period (?). Stater, head of Athena to r., wearing crested Corinthian helmet; *rev.* similar type; in front to l. of bull, AA; in ex., owl facing, flying towards r.; B.M.C. —; Lockett —; Lloyd —; *ex Cahn Sale, Frankfurt, July 1928, lot 111, fine and very rare.* Another, from the same *obv.* die; *rev.* same type, but the inscr. in ex. (instead of above the bull) and the owl, in same form but smaller, is above the bull; *ex Sambon Sale, June 1927, lot 412, rare, but only good staté.* 2
- 3 15 0 1446 VELIA. B.C. 540-500. Drachm, forepart of lion to r., devouring prey; *rev.* Quadripartite incuse square; Hist. Num. page 88. *Ex Lugano Sale, April 1927, lot 240. Very fine.* 1
- 8 10 0 1447* B.C. 450-400. Didrachm, female head r., wearing necklace, hair bound with string of pearls, and tied and turned up behind; *rev.* YEΛHTEΩN (in ex.), lion crouching r.; above, owl, flying towards r.; B.M.C. 7. *Ex Headlam Collection and Lucerne Sale XVI, lot 264. Very fine.* 1
- 8 0 0 1448* B.C. 450-400. Drachm, female head r., diademed, the hair waved and in four rolls behind; *rev.* YEΛH, owl r. with closed wings, on olive-branch; between owl and branch, Δ ; B.M.C. 27 var.; Lloyd 515. *Ex Lugano Sale, April 1927, lot 243. Extremely fine.* 1

Lot

1449*	B.C. 500-450. Didrachm, lion crouching r.; in ex., owl r., head facing; border of dots; <i>rev.</i> head of nymph (of fine style) to r., hair rolled and wavy, wearing earring and necklace; in front, vine-branch, with leaf and bunch of grapes; between head and branch, Φ; B.M.C. 34; De Luynes 635. <i>Ex Lucerne Sale XVI, lot 263. Very fine for the coin.</i>	7	15	0	1
1450	B.C. 400-268. Head of Athena to l., wearing crested Athenian helmet, adorned with triple olive-wreath; behind, owl to l.; <i>rev.</i> ΕΩ, lion seizing stag r.; beneath, uncer. letter, perhaps Λ; B.M.C. 36, <i>fine</i> . Another, similar, helmet adorned with griffin; behind, T; <i>rev.</i> YEΛHTON, lion walking r.; in ex., owl flying towards r.; B.M.C. 45. <i>Ex Cahn Sale, Frankfurt, July 1928, lot 116. Very fine.</i>	5	5	0	2
1451	<i>Obv.</i> same; <i>rev.</i> similar, but inscr. in ex. and owl above lion; beneath lion, T; B.M.C. 47 var.; <i>ex Lucerne Sale XVI, lot 267, very fine and pleasing style</i> . Another, but from diff. dies, the lion's tail curled round r. hind-leg, <i>ex Cahn Sale, Frankfurt, July 1928, lot 117, almost very fine.</i>	12	10	0	2
1452	Similar, but head to r. in higher relief; behind, ⊙; <i>rev.</i> similar, but beneath lion, ⊙; B.M.C. 48, <i>very fine and pretty style</i> . Another; <i>rev.</i> type to l., lion raises r. fore-leg; beneath, >E; B.M.C. 61. <i>Ex Lucerne Sale XIII, lot 123. Very fine.</i>	8	10	0	2
1453	—— Type to l.; the helmet adorned with olive-wreath with fruit; behind, >E; <i>rev.</i> lion to l., looking back, holding ram's head with l. fore-paw; beneath >E; B.M.C. 68, <i>fine</i> . Another, Athena wears crested Phrygian helmet on which female Centaur; behind, >E; <i>rev.</i> lion to l., devouring prey; beneath, Φ; B.M.C. 83, <i>very fine, but the obv. a little off-centre.</i>	5	0	0	2
1454*	Head of Athena, three-quarter face, towards l., hair long, wearing necklace and winged Phrygian helmet inscribed ΚΛΕΥΔΩΠΟΥ; <i>rev.</i> similar to 76b above, but the same mono. between the hind legs (from the same fractured die as the B.M. spec.); B.M.C. 70. <i>Fine for the coin.</i>	5	0	0	1
1455*	Head of Athena to r., wearing crested Athenian helmet adorned with fast quadriga to r.; on crest-carrier ΦΙΑΙΣΤΙΩΝΟΣ; on neck-flap griffin running to l.; in field to l., ⊙; in field, to r., E; border of dots; <i>rev.</i> lion to l., gnawing spear-head; above, the Dioscuri riding to l.; on left and right, Φ I; B.M.C. —; Lockett 559; Car. pl. 140/51; Lloyd —. <i>Fine and very rare.</i>	9	0	0	1

LOT

- 7 0 0 1456* Head of Athena to r., with earring and necklace, wearing crested Corinthian helmet, adorned with fast quadriga driven r. by Nike; on crest-carrier ΦΙΛΙΣΤΙΩΝΟΣ (blundered); on neck-flap, horseman galloping r.; *rev.* usual inscr., lion to l., three spears ? in mouth; beneath, on ex. line, three conventional waves; above lion, Nike flying to l., swinging a bell attached to a fillet; to r. of her, ΦΙ; B.M.C. 89; Lloyd 528, but different *obv.* and *rev.* dies. *Ex Lugano Sale, April 1927, lot 250. Fine and a very rare type.* 1
- 13 10 0 1457* Athena to l., wears earring, necklace, and highly-ornamented Phrygian helmet, on which griffin with curled wing; behind, Φ; *rev.* lion to r., devours ram's head; above Φ I, and grasshopper r.; plain border; B.M.C. 90. *Extremely fine and sharp.* 1
- 11 10 0 1458* Athena to l., wears crested Athenian helmet adorned with curled wing; behind, K; *rev.* lion walks to l.; above, Φ I, and triquetra of legs, with winged talaria; B.M.C. 95. *Ex Sotheby's Sale, Nov. 1927. Extremely fine and sharp.* 1
- 10 0 0 1459* Somewhat similar, but helmet adorned with olive-wreath as well as wing, and type to r.; above, II; in front of neck, Φ (?); *rev.* lion walking to l., head nearly facing; beyond, palm-tree, on either side of which Φ I; B.M.C. 99 var. *Ex Cahn Sale, Feb. 1933, lot 50. Fine and very rare rev. type.* 1
- 10 10 0 1460* Athena to r., wearing crested Athenian helmet, adorned with griffin, with curled wing; above, Δ; *rev.* lion walks to r.; above, Φ I, and pentagram; B.M.C. 102. *Ex Lugano Sale, April 1927, lot 260. Very fine, nice style.* 1
- 4 10 0 1461* The head to l.; griffin has straight wing; on neck-flap, Φ; behind, mono. Α; *rev.* lion walks to r; above, caduceus r.; B.M.C. 106. *Ex Sambon Sale, June 1927, lot 461. Very fine.* 1
- 8 10 0 1462* Another, Athena's head to l., wearing crested Athenian helmet, adorned with Pegasus to l.; neck-flap ornamented; above, Α; behind, in incuse square ΙΕ; in front, Φ; *rev.* lion seizing stag to l; B.M.C. III var. *Extremely fine, sharp and well-spread.* 1

Lot

- 1463* BRUTTIUM. THE BRUTTH. AU $\frac{1}{2}$ Drachm. B.C. 282-203. 64 0 0
 Head of bearded Herakles to l., wearing lion's-skin; behind, club; beneath, Γ ; *rev.* BPETTIQN (in ex.), biga r., driven by Nike, horses galloping; beneath them, Γ (?) and coiled serpent, r; B.M.C. 6. *Very fine and rare.* 1
- 1464* Same Period. Attic Octobol, head of Thetis (?) to r., wearing veil, stephanos, earring and necklace; over l. shoulder, sceptre; behind head, fly; below, Γ ; *rev.* same inscr., Poseidon, naked, stooping l., r. foot on top of Ionic column; in raised l., long sceptre; in field to l., eagle on wreath; B.M.C. 14. *Ex Lucerne Sale XII, lot 538. Very fine.* 1
- 1465 ——— Bust of winged Nike r., wearing broad diadem, earring and necklace, her hair bound with a fillet; behind, plough r.; *rev.* same inscr.; naked male figure, horned, crowning himself; in front to r., ΠΑ (in mono.), *ex Petersen Sale*; B.M.C. 31, *fine*. Another, uncer. sym. and letters, from same source, *very weakly struck, very good.* 2
- 1466* CAULONIA. B.C. 550-480. Stater, ΚΑΥΛ, Apollo Catharsius, holding lustral branch in r., and running figure, with head reverted, also holding branches, on outstretched l.; in front, stag r., looking back; dotted cable border; *rev.* same type incuse; the small figure outlined in relief; across the hand and wrist of Apollo, two rows of tiny incuse squares; border of incuse oblongs; B.M.C. 9 var.; same dies as Lockett 579, the *obv.* equally fine; the *rev.* much finer. *A superb specimen.* 1
- 1467 Similar, the *obv.* inscr. reversed downwards; on r., \odot ; *rev.* Branch in l., serpent (?) on r.; Garr 11; same dies as Lockett 580, *rather worn, very good, ex Petersen Sale*. Another, but the smaller, thicker, module; B.M.C. 13 var., *ex Lugano Sale, April 1927, lot 278, fine.* 2
- 1468 B.C. 480-388. Stater, similar type but in relief; *rev.* stag standing to r. Another, of later style; *obv.* on l. and r., dolphin, downwards; between legs, \odot ; *rev.* beneath stag, Α; cf. Lockett 595. *Both very good, ex Petersen Sale.* 2
- 1469 CROTON. B.C. 550-480. Stater, *obv.* tripod; in front to r., crab; *rev.* same type incuse (the inscr. and crab in relief); B.M.C. 5; Lockett 600 (same dies), *fine*. Another, smaller module, with longer inscr. and without crab; *rev.* flying eagle to r., incuse; B.M.C. 33 var. of leg., no final N, *fine*. And a 5th Cty. B.C. Diobol, *obv.* tripod; *rev.* Pegasos with curled wing flying to l., *in poor state.* 3

LOT

- 11 0 0 1470 B.C. 420-390. Stater, eagle, with closed wings, standing with head reverted, on nose of stag's head r.; *rev.* tripod; in field to l., ivy-leaf, *ex Helbing Sale, Munich, April 1927, lot, 1588; B.M.C. 69, fine.* Another, eagle of similar type standing to r.; *rev.* spray of olive in field to r.; B.M.C. 70, *fine*, but the *rev.* off-centre, and possibly plated. Another, eagle with closed wings standing r., on olive-branch; in field to l., EΔ (?); under eagle's tail, in minute letters, the same two letters repeated (apparently with the first two in the field, an official attempt had been made to obliterate them in the die); *rev.* plain tripod, without handles; B.M.C. —; Lockett —; Lloyd —, *fine.* 3
- 10 10 0 1471* Similar, eagle with raised wings, standing to l. on olive-branch; border of dots; *rev.* KPO, tripod; in field to r., crane standing to l.; beneath crane, Δ; B.M.C. 78. *Ex Helbing Sale, Munich, April 1927, lot 1589. Very fine.* 1
- 12 0 0 1472* Similar, KPOTΩNIATAN, similar type, but of much finer style and in high relief; plain border; *rev.* tripod-lebes, having three handles, standing on base; from two of the handles hangs a fillet; on the tripod is a round cover with handle; in front to l., ear of barley with leaf; in field r., python coiled, erect; B.M.C. 83; Lockett 628. *Very fine, the rev. somewhat double-struck.* 1
- 30 0 0 1473* Head of Hera Lakinia, full-face, towards r., wearing necklace and stephanos ornamented with honey-suckle; plain border; *rev.* KPOTΩNI ATΑΣ, Herakles, naked, reclining on rock covered with lion's skin; in extended r., wine-cup; in l. he holds club; on rock, bow; in front to l., large B; B.M.C. 95. *Very fine and fine style.* 1
- 10 10 0 1474* KPO[TΩNIA] TΑΣ, head of Apollo r., laur., hair long; border of dots; *rev.* Infant Herakles, facing, on bed; in each extended hand a serpent, which he is strangling, and whose folds entwine his body; plain border; a graffito monogram in l. field of *rev.*; B.M.C. 96. *Ex Lucerne Sale XIII, lot 165. Fine and nice style.* 1
- 10 0 0 1475* Same head r., but in lower relief and different style; *rev.* KPO, tripod-lebes, having neck and three handles; in field to l., branch of laurel, filleted; B.M.C. 98. *Very fine.* 1

Lot

- | | | | |
|-------|--|--------|---|
| 1476 | LOCRI EPIZEPHYRII. B.C. 332-326. Stater, ΔΟΚΡΩΝ, head of Zeus to l., laur., hair long; <i>rev.</i> eagle flying to l., devouring hare; in field to l., fulmen (portion only); B.M.C. 6 var.; an interesting overstruck piece, traces on <i>obv.</i> and <i>rev.</i> , with letter A in triangular incuse under the ear on the former, <i>ex Lucerne Sale XII, lot 601, very fine, nice style.</i> Another, eagle flying to l., devouring hare; <i>rev.</i> same inscr., thunderbolt; beneath, caduceus l.; B.M.C. 2, <i>ex Lugano Sale, April 1927, lot 307, fine.</i> | 11 0 0 | 2 |
| 1477* | Similar to first coin in previous lot, but of much coarser style, and the head of Zeus is to r.; <i>rev.</i> above the eagle, thunderbolt; B.M.C. 13. <i>Extremely fine and sharp, except for a little double-striking on the rev.</i> | 9 0 0 | 1 |
| 1478 | RHEGIUM. B.C. 494-480. Drachm, lion's scalp; border of dots; <i>rev.</i> RECI(N) (retrograde), calf's head to l.; border of dots, <i>ex Lugano Sale, April 1927, lot 317, fine, but somewhat bruised.</i> B.C. 466-415. Same; <i>rev.</i> RECINOS (the first letter retro. and inverted), male figure, bearded, naked to waist, seated l., r. resting on staff, l. on hip; the whole within olive-wreath; Drachm; B.M.C. 15 var. of leg., <i>fine.</i> | 4 5 0 | 2 |
| 1479* | B.C. 466-415. Tetradrachm, the <i>obv.</i> same as two previous coins; <i>rev.</i> RECI / NOS, same as second coin in previous lot; B.M.C. 8. <i>Ex Sambon Sale, Paris, June 1927, lot 582. Very fine, but the rev. figure a little weakly struck.</i> | 21 0 0 | 1 |
| 1480* | Another, of flatter style, and the <i>rev.</i> inscr. RECIN O S (the first letter retro. and inverted; the N retro.); B.M.C. 8 var. of leg. <i>Ex Ravel, April 1929....Very fine.</i> | 19 0 0 | 1 |
| 1481* | B.C. 415-387. Tetradrachm, lion's scalp; border of dots; <i>rev.</i> PHI'INON, head of Apollo to r., laur., hair turned up; behind, sprig of olive; B.M.C. 23. <i>Ex Lugano Sale, April, 1927, lot 319. Very fine, but some corrosion pitting, especially on the obv.</i> | 40 0 0 | 1 |
| 1482* | Same <i>obv.</i> ; <i>rev.</i> initial letter of inscr. off the flan; head of Apollo, laur. to l., hair long on neck; B.M.C. 36; Lloyd 700. <i>Ex Ravel, April 1929. Charming style of the Period of finest Art. Very fine, but some corrosion and corrosion pitting.</i> | 60 0 0 | 1 |

LOT

- 15 0 0 1483* TERINA. B.C. 425-500. Stater, female head to l., wearing sphendone, broad in front, and necklace; the whole in olive-wreath; *rev.* TEPI , Nike, winged, seated to l. on three-handled vase lying on its side, and holding wreath and caduceus; B.M.C. 5 var.; Reg. 14; Car. 178/28. *Ex Munich Sale, March 1928, lot 63. 120.4 grs. Very fine.* 1
- 5 0 0 1484 Another. TEPINAION, female head to l., wearing sphendone, hair in korymbos; *rev.* Nike, winged, seated to l., on square cippus; she holds caduceus in r. by the middle, handle forwards; B.M.C. 21; Reg. 50; *very good.* Another, hair in sphendone; behind, Π (reversed); *rev.* similar, but Nike holds wreath; behind, Π; B.M.C. 36; Reg. 61, *fine.* After B.C. 400. One third Stater, as B.M.C. 50, but *obv.* type to r. and no mono. on *rev.*, *fine, but scraped.* 3
- 7 5 0 1485 Bronze of Calabria; Lucania and Bruttium; Brundisium (1); Tarentum (1); Velia (1); Metapontum (3); Paestum (1); The Bruttii (6); Locri (1); Nuceria (1); Rhegium (3); Vibo Valentia (3). *Mostly fine, a few very fine attractive pieces.* 21
- 8 15 0 1486 SICILY. AGRIGENTUM. B.C. 550-472. Didrachm, AK RA (the R retro.), eagle, with closed wings, standing to r.; *rev.* crab; B.M.C. 20, *fine.* B.C. 472-413. Tetradrachm, AKRAC ΣOTNA, same type to l.; *rev.* same type; B.M.C. 38. *Ex Lucerne Sale XII, lot 671, very fine.* 2
- 14 0 0 1487* AV B.C. 413-406. Gold Diobol, AKP, eagle, with closed wings, standing to l. on rocks, devouring serpent which he holds in his talons; beneath, marks of value . . . ; *rev.* ΣΙΛΛΑ ζOM, crab; B.M.C. 1, practically uncirculated, but weakly struck both sides. *Ex Lugano Sale, April 1927, lot 325. 20.2 grs.* 1
- 92 0 0 1488* Same Period. Tetradrachm, two eagles standing r. on supine hare, which lies on rocks; the farther, with spread wings, about to tear the prey; the nearer, with closed wings, raising its head and screaming; behind, locust to l. (the magistrate's name which should occur on the piece, is off the flan); *rev.* AKPAΓANTI NON (in ex.); quadriga to l., driven by Nike, who holds reins in both hands and goad in l.; above, vine-branch, with leaves and fruit; border of dots; B.M.C. 58, variety of symbol. 258.5 grs. *Ex Munich Sale, March 1928, lot 66. Fine, and very rare.* 1

Lot

- 1489 Same Period. Hemi-drachm, eagle standing r., with spread wings, on supine hare, about to tear it; behind, barley-corn (double-struck); *rev.* A K P A I', crab, and pistrix to l., holding fish in its mouth; B.M.C. 63 var., *ex Lucerne Sale IV, lot 207 and Lucerne Sale XIII, lot 198, very fine for the coin.* Another, similar type to l.; border of dots; *rev.* A K R, crab; beneath, tunny-fish r.; B.M.C. 69 var., *ex Lucerne Sale XIII, lot 202, very fine, small, but well-struck.* 2
- 1490* B.C. 338-287. Drachm, head of Zeus r., laur.; border of dots; *rev.* AKPAI'AN TINΩN, eagle, with spread wings, standing r.; in field to r., ΔΓ (in mono.); B.M.C. 83. *Ex Lugano Sale, April 1927, lot 340. Extremely fine.* 1
- 1491* CAMARINA. B.C. 461-405. Tetradrachm, head of young Herakles to l., wearing lion's-skin, with paws tied at the throat; only a few letters of the inscr. in front of the face are showing; *rev.* quadriga to r., driven by Athena; horses galloping; above, Nike, flying l., crowning charioteer; in ex., two amphorae; on line of ex., traces of ΕΞΑΚΕΣΤΙΔΑΣ; B.M.C. 14. 219.9 grs. Salinas, XVII, 16. *Ex Sambon Sale, Paris, June 1927, lot 699, 1220 frs. Very good, but pitted.* 1
- Special note:—Being a pedigree coin from a famous auction, we have included this coin, for it cost the late owner a considerable sum. Some experts might consider it to have been very corroded and drastically cleaned, but our opinion is definite that the piece is a clever cast forgery.
- 1492* CATANA. B.C. 461-413. Tetradrachm, KATANAION, young male head to l., laur.; hair short and wavy; behind, laurel-leaf with berry; *rev.* quadriga r., driven by male charioteer; horses walking; above, Nike flying r. crowning the horses; B.M.C. 24. *Rare, fine, but some corrosion pitting, especially on the rev.* 1
- 1493* B.C. 461-413. Tetradrachm, KATANAION, head of Apollo r., laur.; hair short and straight behind; *rev.* quadriga to r., the horses walking; above, Nike flying to l. crowning the charioteer; cf. B.M.C. 26. *Ex Woodward Collection; Oxford 1928, No. 56 and Lucerne Sale XV, lot 281. Rare, very fine and charming style.* 266.2 grs. 1

LOT

- 320 0 0 1494 B.C. 413-404. Tetradrachm, head of Apollo, facing, slightly inclined towards the left; hair long and floating loose (the mag's name, which is normally in field to r., is off the flan); *rev.* KATANAIΩ[N] (in ex.); quadriga to l., horses in high action; above, Nike holding wreath and fillet, flying r. crowning the charioteer; in ex., fish to l.; B.M.C. 31. 269.0 grs. *Ex Lucerne Sale XV, lot 282. Very rare and very fine.* 1
- 19 10 0 1495* CEPHALOEDIUM. B.C. 409-396. Tetradrachm, nymph's head to r., modelled on the Syracusan Arethusa, with wreath of reeds; around, four dolphins; *rev.* Punic inscr. 'Resh Melkart' galloping quadriga to r.; above, Nike crowning driver; cf. Lucerne Sale V (B.M. Dups.), lot 868; slightly diff. *obv.* die; same *rev.* die. *Very fine.* 1
- 7 10 0 1496 GELA. Before circ. B.C. 466. Tetradrachm, quadriga r.; horses walking; above, Nike flying r. crowning horses; *rev.* [(]EΛΑΣ, fore-part of man-headed bull, swimming to r.; B.M.C. 5, *ex Lugano Sale, April 1927, lot 352, 120 frs.*, the *obv.* has been ruined by extensive tooling. Another, similar type, but without Nike; beyond horses, Ionic column (meta); *rev.* similar to first coin; B.M.C. 11, *fine, but rev. weakly struck.* 2
- 7 10 0 1497* Same Period. Tetradrachm, as above, with Ionic column, but type to l.; and, in ex., pistrinx to l.; *rev.* similar type; retro. inscr. in front of face; above, Nike flying r. crowning the bull; B.M.C. —; Bab. —; Grose I, p. 264, 2241; curious, slightly barbarous style. *Ex Lucerne Sale 1933, lot 503. Rare and fine.* 1
- 9 10 0 1498 Didrachm of same Period. Horseman to l., wearing tall conical helmet and wielding spear; *rev.* usual inscr. and type to r.; B.M.C. 18, var. of leg., not retro., *rare with obv. type to l., fine.* Another, similar in all respects except that *obv.* type is to r., *very fine but a little weak on obv.*; B.M.C. 19. 2
- 16 10 0 1499 B.C. 466-413. Tetradrachm, quadriga to r.; horses walking; above, Nike flying to r. crowning horses; in ex., floral scroll; *rev.* (EΛΑΣ, man-headed bull, swimming to r.; B.M.C. 14, var. of leg. (not retro.), *very fine, good style.* Another, similar, but type to l. and ex. plain; *rev.* Γ in inscr. and type to l.; B.M.C. 48, *fine, but small.* 2

Lot

- 1500* Same Period. Tetradrachm, ΓΕΛΟΙΟ[Ν] (retro.) in ex.; quadriga to r., driven by youthful charioteer; above, Nike flying r., crowning the horses; *rev.* Sosipolis, standing to l., crowning the bull Gelas with wreath; above, [ΣΟΣΙΠΟ]ΛΙΣ (retro.); B.M.C. —; Regling, Cat. Warren, No. 232; cf. Pozzi 441. *Very rare.* Very good and wide-spread, but the upper part of the figure of the Goddess weakly struck; has been heavily corroded, especially the *obv.* 251.4 grs. *Ex Sambon Sale, Paris, June 1927, lot 762, has been cleaned since.* 1 33 0 0
- 1501* B.C. 413-405. Tetradrachm, ΓΕΛΩΙΩΝ, fast quadriga to l., driven by youth; above, eagle flying to l.; in ex., stalk of barley to l.; *rev.* ΓΕ[ΛΑΣ] (retro.), forepart of man-headed bull to r.; above, barley-corn; B.M.C. 59. 276.6 grs. *Ex Pozzi Collection, lot 762. Rare and very fine.* 1 100 0 0
- 1502 HIMERA. Before circ. B.C. 482. Drachm, cock to r.; border of dots; *rev.* VV, hen r., enclosed by border of incuse rectangles, all within incuse square, *ex Sambon Sale, Paris, June 1927, lot 772, unusually fine,* but the cock's comb off the flan; B.M.C. 19, variety, no inscr. on *obv.* B.C. 482-472. Didrachm, HIMERA (traces only), cock standing to l. (head off flan); crab, in concave field), *ex Sambon Sale, Paris, June 1927, lot 778; B.M.C. 24-26, fine.* 2 13 10 0
- 1503* LEONTINI. B.C. 500-466. Tetradrachm, quadriga to r.; horses walking; above, Nike flying to l. crowning the driver; in ex., lion bounding to r.; *rev.* ΛΕΟΝΤΙΝΟΝ; Archaic head of Apollo, laur., to r.; the hair plaited and waved; around, three laurel-leaves; beneath, lion running to r.; B.M.C. 10; Bab. pl. 73, 10. *Ex Headlam Collection, No. 40, and Lucerne Sale 1933, lot 538. 264.3 grs. Rare and very fine, but for the cheek and neck being somewhat scraped and burnished.* 1 29 0 0
- 1504* Same Period. Didrachm, naked horseman r., holding whip and reins; horse walking; *rev.* ΛΕΟΝΤΙΝΟΝ, lion's head r., with open mouth; around, four barley-corns; B.M.C. 12. *Almost very fine, has been a little corroded.* 1 9 0 0
- 1505* B.C. 466-422. Tetradrachm, head of Apollo r., hair turned up behind and bound with laurel-wreath of three rows of leaves; border of dots; *rev.* ΛΕΟΝΤΙΝΟΝ, lion's head r., mouth open; around, four barley-corns; B.M.C. 29, var. of leg. *Ex Lucerne Sale 1933, lot 744. 266.2 grs. Very fine.* 1 16 0 0

LOT

- 7 0 0 1506 Same Period. Tetradrachm, similar, except head to l., and hair rolled behind; *rev.* similar, LEON-T-IN-ON; B.M.C. 38, var. of leg., *fine*. And a Litra of the same period, LEON, lion's head r.; *rev.* Lissos sacrificing at altar; behind, barley-corn; B.M.C. 46, *very good*. 2
- 18 10 0 1507 MESSANA, under the name of Zankle, before B.C. circa 490. Drachm, DANKLE, dolphin to l. within a sickle-shaped band (the port of Zankle); border of dots with inner linear border; *rev.* scallop-shell within an incuse key-pattern of peculiar form; B.M.C. 4, *ex Lucerne Sale XII, lot 762, fine*. After circ. B.C. 476. Tetradrachm, biga of mules r.; above, Nike flying r., crowning the mules; in ex., olive-wreath r.; *rev.* WOIW MESSA, hare running r.; beneath, spray of olive; B.M.C. 27, *ex Lucerne Sale XII, lot 766 (incorr. Cat. as B.M.C. 18). 258.9 grs., fine*. 2
- 10 0 0 1508* MOTYA. Circ. 413-397. Tetradrachm, head of nymph to r. (copied from Kimon's Syracusan Decadrachm), wearing ear-ring and necklace; around, four dolphins; *rev.* crab. For a somewhat similar piece, see A. Evans, *Syr. Med.*, N.C. 1891, Pl. II, 5 and pgs. 271-2, which is without the dolphins. *Very rare. Ex Kaufman Sale, lot 128 (where described as a unique variety). 234.2 grs.; 15.8 grms. See note below regarding condition.* 1
- ∴ *The rev. of this coin is untouched; but the obv. has been so tooled and re-cut as to be practically re-made, and in our opinion ruined, even though it cost the late owner 1500 mks. by auction.*
- 260 0 0 1509* NAXUS. B.C. 461-430. Tetradrachm, head of Dionysos r., bearded; hair long and tied in a bunch behind, and bound with a wreath of ivy; border of dots; *rev.* N-AXI-ON, bearded Seilenos, of strong archaic style, naked and ithyphallic, with pointed ear and long tail, seated to front on the ground with head in profile to l., towards kantharos in his r. hand; supports himself with l. hand; B.M.C. 7; H. A. Cahn, Pl. III., *obv.* 54 r., die-flaw in front of mouth; *rev.* 45. *Ex Allatini Collection, Lucerne Sale XIII, lot 238. 265.9 grs., 17.23 grms. Superb archaic style. Extremely fine.* 1
- 5 15 0 1510* SELINUS. B.C. 480-466. Didrachm, Selinon leaf; *rev.* incuse square of twelve divisions, the alternate ones deeper; B.M.C. 1. *Ex Lucerne Sale XII, lot 809.* 1

Lot

- 1511* B.C. 445-435. Didrachm, ΣE-VI-WOW-T-OW, Herakles contending with a wild bull to r., which he seizes by the horn, and is about to slay with club; *rev.* Y only showing of inscr., River Hypsas sacrificing before altar, around which a serpent twines. He holds branch and phiale; behind him, a marsh-bird is seen departing; in field to r., selinon leaf; B.M.C. 34, var. of leg. *Ex Munich Sale, March 1928, lot 98.* 134.2 grs. *Very fine and sharp*, but top of head on *rev.*, off the flan. 1 24 0 0
- 1512* SYRACUSE. Before circ. B.C. 485. Tetradrachm, ΣYRA, slow quadriga to r.; border of dots; *rev.* incuse square divided into four parts; in centre, an incuse circle containing head of nymph or goddess to l.; B.M.C. 1. *Ex Cahn Sale, Frankfort, Feb. 1933, lot 94.* *Very rare and very fine for the coin.* 250.6 grs. 1 30 0 0
- 1513* B.C. 485-478. Tetradrachm, quadriga to r.; horses walking; above, Nike flying r. crowning the horses; double exergual line; border of dots; *rev.* ΣVRAK-O-ΣI-O—N, female head r., the hair turned up behind under pearl diadem; around, four dolphins; Boehr 202. *Very fine, unusually sharp and well-centred.* 1 19 0 0
- 1514 Didrachm of same Period. Bearded horseman r., leading a second horse; *rev.* ΣVRA-KO-ΣIOW, female head to r.; around, three dolphins; B.M.C. 46, var. of leg., *very good.* Drachm, ditto, but single horse and *rev.* leg., ΣVRAKOΣI-O-N; B.M.C. 47, var. of leg., *very good.* And a Litra of usual type, *rev.* sepia; B.M.C. 53, *fine.* 3 6 10 0
- 1515 B.C. 478-467. Tetradrachm, slow quadriga r.; above, Nike crowning the horses; in ex. pistrix r.; *rev.* Σ-VRAKOΣ-I-ON, female head r., wearing earring, necklace, and diadem of beads; hair waved, and turned up behind under diadem, over which ends fall; around, four dolphins r.; B.M.C. 72; Du. Ch. 25 (same dies), *fine, but somewhat scraped.* B.C. 466-425. Tetradrachm, *obv.* similar; *rev.* the hair bound with broad diadem, the back hair turned up under diadem and protruding in bunch above; around, four dolphins; B.M.C. 100; Du Ch. 38 (same dies), *very fine, the rev. a little off-centre.* 2 30 0 0
- 1516* B.C. 466-412. Tetradrachm, quadriga to l.; horses prancing; above, Nike r., crowning charioteer; in ex. pistrix to l.; *rev.* inscr. unbroken; female head r., wearing earring and necklace; hair in korymbos; around, four dolphins r.; B.M.C. 105; Du Ch. 46 (same dies). *Fine.* 1 13 10 0

Lot

- 38 0 0 1517* Tetradrachm, slow quadriga r.; above, Nike r. crowning the horses; *rev.* inscr. unbroken; female head r., wearing earring, necklace and ampyx adorned with olive-wreath; the hair enclosed in sakkos, drawn together by a string at the crown of the head, the ends of two strings hang down loose; the saccos is ornamented with a band of meander and zig-zag patterns; around, four dolphins; B.M.C. 118 (?); Du Ch. 56 var.; Boehr; *obv.* 331; *rev.* 449. *Rare, and very fine for the coin.* 1
- 14 0 0 1518* Tetradrachm. Circ. B.C. 440. Slow quadriga r.; above, Nike l., crowning the horses; *rev.* ΣYP-A-K-O-Σ, female head r. wearing earring and necklace, and bound with cord wound four times round the hair; around, four dolphins; B.M.C. 121; Du Ch. 48. *Fine.* 1
- 17 10 0 1519* Another, similar, but reads ΣYPAK-IO; B.M.C. 123. *Ratto Sale, Feb. 1927. Very fine.* 1
- 55 0 0 1520* Tetradrachm by Eumenes (unsigned). B.C. 425-413. Quadriga to l.; horses galloping in step; above, Nike flying r., with untied wreath, to crown the charioteer; *rev.* ΣYP-A-K-O-Σ-ION (retrograde); head of Arethusa-Artemis to l., wearing earring and necklace; the hair waved from the crown of the head and brought up behind; two loose tresses at the neck; around, four dolphins; Tudeer No. 20 (h); Du Ch. 61 (same dies); Lockett 960. 262.3 grs. *Ex Lugano Sale, April 1927, lot 424. Very fine and widespread, the only blemish being two small cuts on the cheek.* 1
- 44 0 0 1521* Tetradrachm by Eukleidas (unsigned). B.C. 413-399. Galloping quadriga to l., one of the horses looking back; above, Nike flying r., crowning the charioteer; in ex. ear of barley to l.; *rev.* head of Arethusa to l., wearing earring and necklace; hair bound with sphenone ornamented with stars behind; around, four dolphins; inscr. ΣYPAKOΣI—[ON]; B.M.C. 217; Tudeer 87; Du Ch. 81. *Ex Munich Sale, Nov. 1928, lot 3655. 266.2 grs. Rare and very fine.* 1
- 9 10 0 1522* Tetradrachm by unknown artist. B.C. 413-399; *obv.* very similar to preceding coin, but under horses' fore-feet, ivy-leaf; *rev.* very similar but slightly differing style; traces only of inscr.; Du Ch. 76; Tudeer 82. *Fine, but detail rather rubbed.* 1

Lot

- 1523* Dekadrachm by Kimon. B.C. 406-357. [ΣΥΠΑΚΟΣΙΩΝ], mostly off the flan, traces of a few letters only; head of Arethusa to l., diademed and wearing hair net, earring and bead necklace; in field, four dolphins; on diadem, over forehead, KI; *rev.* fast quadriga to l.; in field, above, Nike carrying a wreath in her outstretched hands and flying towards the charioteer; in ex. prize armour; B.M.C. 204; Du Ch. —. *Ex Lucerne Sale XII, 1926, lot 949. 670.2 grs. Very fine and very fine style (the obv. very pleasing; the rev. from a rusty die).* 160 0 0
1
- 1524* Tetradrachm by Eukleidas (unsigned). B.C. 399-387. Galloping quadriga to l., one of the horses looking back; above, Nike flying r. crowning the charioteer; in ex. (double-line), a dolphin swimming to l.; *rev.* ΣΥΠΑ . . . Ω-N, head of Persephone to l., wearing earring and necklace; hair bound with sphendone, over which several tresses fly black and float upwards; around, four dolphins; plain border; B.M.C. 197, var. of leg.; Tudeer 99, *obv.* 34; *rev.* 68. *Rare variety, Tudeer only records two specimens of this combination of dies. Very fine and widespread.* 34 0 0
1
- 1525* Drachm (style of Eukleidas). B.C. 399-387. ΣΥ . . . ΟΣΙ-Ω-N, head of Athena, three-quarter face to l., wearing triple-crested Phrygian helmet; around, four dolphins; *rev.* inscr. in full; Hero (Leukaspis) fighting to r.; behind him, altar; in front, dead ram; in ex. [Α]ΕΥΚΑΣΙΗ[ΙΣ]; B.M.C. 226. *Ex Lucerne Sale 1933, lot 784. Fine.* 8 10 0
1
- 1526* B.C. 357-353. Electrum 50 Litrae, head of Apollo to l., laur.; behind, portion of uncer. symbol; *rev.* ΣΥΠΑΚ-ΟΣΙΩΝ, tripod-lebes with neck and three handles; B.M.C. 253 ff. *Ex Munich Sale, Mar. 1928, lot 113. Very fine.* 12 10 0
1
- 1527 B.C. 345-317. Stater of Corinthian type, same inscr. (in one line), head of Athena in crestless Corinthian helmet to r.; *rev.* Pegasos, with straight wing, flying to r.; B.M.C. (Corinth), pag. 98, No. 276, *very fine*; flan a shade small. Same Period. $1\frac{1}{2}$ Litra, head of Arethusa with dolphins around; *rev.* half Pegasos to l.; B.M.C. 276, *ex Munich Sale, April 1927, lot 1636, fine and scarce*, if genuine, but its authenticity doubtful. 6 0 0
2

LOT

- 35 0 0 1528* Agathocles, Reign of. Period I, B.C. 317-310. Tetradrachm, head of Persephone to l., wearing wreath of corn, earring and necklace; around, three dolphins; beneath, NI; *rev.* ΣΥΠΑΚΟΣΙΩΝ (in ex.), quadriga to l.; horses in high action; above, triquetra of legs; beneath, the inscr.; in ex., AN (in mono.); border of dots; B.M.C. 350. *Ex Sotheby's Sale, Nov. 1927. Extremely fine, sharp and well-centred.* 261.6 grs. 1
- 10 0 0 1529* — Period II, B.C. 310-304. Tetradrachm, KOPΑΣ (upwards), head of Persephone to r., hair long and crowned with corn-wreath; border of dots; *rev.* ΑΓΛΑ●ΟΚΛΕΙΟΣ (sic), Nike, half-draped, standing r., erecting trophy; in field to r., triquetra of legs; plain border; B.M.C. 379, var. of leg.; Α's for A's in *rev.* leg. *Ex Lucerne Sale 1923, B.M. Dups., lot 1183; and Ratto, Feb. 1927. Very fine, but a bad die-flaw on nose and bruises on eye and fore-head.* 1
- 36 0 0 1530* — Period III, B.C. 304-289. Α 80 Litrae, head of Athena r., wearing earring, necklace and crested Corinthian helmet without neckpiece and adorned with griffin running to r.; *rev.* ΑΓΛΑ●ΟΚΛΕΟΣ ΒΑΣΙΛΕΟΣ, winged thunderbolt; beneath, Φ; B.M.C. 418. 88 grs. *Extremely fine.* 1
- 4 10 0 1531* Hieron II, B.C. 274-216. ΑR 4 Litrae with portrait of his son, Gelon; *obv.* beardless head of Gelon to l., wearing diadem; border of dots; *rev.* ΣΥΠΑΚΟΣΙΩΙ Γ'ΕΛΩΝΟΣ, eagle, with closed wings, standing r. on thunderbolt; behind, Α; in front, ΒΑ; B.M.C. —; cf. 534 ff. *Fine and scarce.* 1
- 24 0 0 1532* — Tetradrachm or 16 Litrae, with portrait of his Queen Philistis; *obv.* head of Philistis l., diademed and veiled; behind, long torch flaming; *rev.* ΒΑΣΙΛΙΣΣΑΣ ΦΙΛΙΣΤΙΔΟΣ, quadriga to r.; horses in high action; beneath their fore-legs, stalk of barley r.; above, crescent, horns upwards; in front, ΚΙΣ; B.M.C. —; cf. 548 and 552. *Ex Lucerne Sale XII, lot 1022; obv. from a blurred die; rev. extremely fine; a fine striking crack in flan.* 1
- 10 0 0 1533* Five Litrae of same type; *obv.* behind head, palm-branch; *rev.* same inscr. biga to r; in front of horses, Ε.; B.M.C. 559. *Ex Ratto, Feb. 1927. Rare and very fine.* 1
- 9 0 0 1534* Another, behind head on *obv.*, a wreath; *rev.* the horses walking (instead of prancing); and in front, Φ; B.M.C. 562 variety. *Ex Laughlin Sale, Lucerne, Dec. 1933, lot 41. Rare and very fine.* 1

LOT

- 1535* Hieronymus. B.C. 216-215. 10 Litrae, head of Hieronymus to l., diademed; behind, K (retro.); *rev.* ΒΑΣΙΛΕΩΣ ΙΕΡΩΝΥΜΟΥ, winged thunderbolt; above, KI; B.M.C. 640. 130.6 grs. *Very fine, sharp, but the obv. somewhat double-struck.* 8 0 0
1
- 1536* Democracy. B.C. 215-212. 12 Litrae, head of Athena to l., wearing crested Corinthian helmet, earring and necklace; *rev.* ΣΥΡΑΚΟΣΙΩΝ, Artemis standing to l. with quiver slung over her shoulder; she discharges an arrow from her bow; at her feet a hound, running to l.; in field to l., MI; plain border; B.M.C. —; cf. 652. *Ex Lucerne Sale XII, lot 1033. Fine, widespread.* 7 10 0
1
- 1537* SICULO-PUNIC. Tetradrachm. 4th Century B.C. Head of Persephone to r., wearing earring and wreath of reeds; around, three dolphins; *rev.* Punic inscr. A M M Ch N T, horse's head to r.; behind, palm-tree with two bunches of fruit; same *obv.* die as Lucerne Sale V; B.M. Dups. 2988, but *rev.* type to r.; Lockett —; Lloyd —. *Very fine and a rare variety.* 31 0 0
1
- 1538* ——— Later 4th Cty. B.C. Tetradrachm, head of Herakles in lion's-skin to r.; *rev.* similar to preceding but type to l., same inscr., unusually clear; cf. Lloyd 1647, same *obv.* die; diff., *rev.* die. *Very fine.* 7 10 0
1
- 1539 Bronze of Sicily. Agrigentum (1); Alaesa (1); Messana (1); Syracuse (20); Siculo-Punic and Carthage (3); Tauromenium (1). *Mostly fine; a few very fine attractive pieces.* 8 0 0
27
- 1540 MACEDON. CITIES, etc. ACANTHUS. B.C. 424-400. Tetrobol, forepart of bull kneeling to l., on one knee, his head turned back; above, olive-wreath, untied; *rev.* shallow quadripartite incuse square; B.M.C. 30, *ex Lugano Sale, April 1927, lot 475, fine.* TERONE. B.C. 480-424, Tetrobol, TE Oenochoe; border of dots; *rev.* as first coin; B.M.C. 7, *ex same sale, lot 480, very good.* KINGS OF MACEDON. AMYNTAS III. First Reign, B.C. 389-383, head of bearded Herakles r., wearing lion-skin; *rev.* AMY NTA, incuse square, within which linear square containing free horse standing r., Stater, B.M.C. 2, *ex same sale, lot 521, fine.* 6 10 0
3

LOT

- 15 0 0 1541* PHILLIP II. B.C. 359-336. Gold Stater, head of Apollo r., laur., with short hair; *rev.* ΦΙΛΙΠΠΙΟΥ, biga to r.; under horses' fore-legs, crescent, upwards, horns outwards; M.145 (uncer. Macedonian Mint). *Ex same Sale as foregoing, lot 535. Very fine.* 1
- 4 10 0 1542 Tetradrachm, bearded head of Zeus r., laur.; *rev.* same inscr. (divided); bearded Macedonian horseman wearing kausia and chlamys, r. hand raised, riding to l.; beneath, trident-head to l. (Potidaea), *ex Lugano Sale, Apr. 1927, lot 559, the scarcer rev. type, fine.* Hemi-drachm, head of Apollo to r., wearing plain taenia; naked boy-rider to r.; beneath horse, head of bearded man-headed bull to r., *ex same sale, lot 559, very fine, better style than usual, and a scarce variety.* 2
- 13 0 0 1543* ALEXANDER III (the Great). B.C. 336-323. Gold Stater, head of Athena to r., wearing crested Corinthian helmet adorned with coiled serpent; the hair in long plaits; *rev.* ΑΛΕΞΑΝΔΡΟΥ, winged Nike standing to l., holding naval standard and wreath; in field to l., trident-head, downwards, M. 105. *Very fine.* 1
- 10 10 0 1544 Late style Tetradrachm, sym. half Pegasos, with curled wing to l.; two monos., M. 917 (Lampsacus), *fine.* Drachm, KA (in mono.) and Φ, *fine.* DEMETRIUS POLIORCETES. B.C. 306-283, Tetradrachm, head of Demetrius to r., horned and diademed; *rev.* ΒΑΣΙΛΕΥΣ ΔΗΜΗΤΡΙΟΥ, Poseidon to l., resting foot on rock, and leaning on trident; in field, r. and l., two monos, *ex Lucerne Sale, XII, lot 1182, H.N. 230, fig. 142, fine.* 3
- 7 0 0 1545* ANTIGONAS GONATAS. B.C. 277-239, and ANTIGONUS DOSON, B.C. 229-220. Tetradrachm, Macedonian shield, decorated with crescents and stars, in centre of which, head of Pan, horned, to l., with pendulum at shoulder; *rev.* ΒΑΣΙΛΕΥΣ ΑΝΤΙΓΟΝΟΥ, Athena Alkis of archaistic style, hurling fulmen, and holding shield, to l.; in field to l., Macedonian helmet; in field to r., ΗΛ (in mono.); H.N., p. 231, fig. 144; cf. Pozzi 970. *Extremely fine and sharp.* 1
- 4 5 0 1546 Macedonian bronze. Amphipolis (2); Philippi (1); Traclium (2); Kings, Philip II (3); Alexander III (2); Cassander (1); Philip V (3); Antigonus I (1, doubtful); Imperial Times (1). *Mostly fine, a few very fine.* 16

LOT

- 1547* THRACE. AENUS. B.C. 450-400. Tetradrachm, head of Hermes to r., wearing close-fitting petasos, ornamented with a circlet of beads; *rev.* AIN, goat walking r.; in front, caduceus; the whole in incuse square; B.M.C. 5, May, Ainos, 1950, No. 255c. *Ex Lugano Sale, April 1927, lot 789, and Lucerne Sale V (B.M. Dup's.), lot 1509, Pl. XVII, 252.15 grs. Very fine.* 1 68 0 0
- 1548 Diobol of the same period. Similar, except the rim of the petasos wider; *rev.* AINI, the goat raises nearer foreleg; beneath, crab; the whole in incuse square; B.M.C. —; for a Tetrobol similar, cf. B.M.C. 8. *Ex same sale as preceding, lot 793. 21.55 grs. Very fine, but a shade weakly struck.* 1 6 0 0
- 1549 ISTRUS. 72.9 grs. Two young male heads united, in opposite directions, upwards and downwards; *rev.* ΙΣΤΡΗ, sea-eagle with closed wings, standing to l. on dolphin to l., which he attacks with his beak; above eagle's tail, N; beneath dolphin, Δ; B.M.C. 9, *very fine but the obv. a shade double-struck.* And a poor Thasos Tetradrachm of slightly barbarous style; B.M.C. 79. 2 2 0 0
- 1550* THESSALY. LARISSA. B.C. 400-344. Drachm, head of fountain nymph, Larissa, three-quarter face towards l.; hair confined by fillet and floating loosely; *rev.* [ΛΑΡΙΣΣ]—ΑΙΩΝ, horse feeding r., l. forefoot raised; B.M.C. 57, etc. *Ex Lugano Sale, April 1927, lot 1009. Very fine and quite pleasing style.* 1 8 10 0
- 1551* ILLYRIO-EPIROTE COINAGE. DAMASTIUM. B.C. Fourth Century. Stater, head of Apollo to l., laur.; *rev.* ΔΑΜΑΣΤΙΝΩ[N], tripod; all in incuse square, May, *obv.* Pl. II, No. 24; *rev.* May —. 207.65 grs. *Very fine.* 1 29 0 0
- 1552* LOCRI. LOCRI OPUNTHI (Epicnemidii). B.C. 369-338. Stater, head of Persephone to r., wearing earring (with five pendants) and necklace, hair bound with wreath of corn-leaves; *rev.* ΟΠΟΝΤΙΩΝ, Ajax, the son of Oileus, naked, armed with sword, shield (adorned with griffin to r.), and crested Corinthian helmet, in fighting attitude to r.; on ground, spear; B.M.C. 28. *Ex Lugano Sale, April 1927, lot 1231. Pleasing style, but rather worn. Fine.* 1 8 0 0

LOT

- 5 10 0 1553 Hemi-drachm of same period. similar types, except serpent on shield and kantharos on ground; B.M.C. 9, *ex same sale, lot 1224, fine*. B.C. 338-300. Hemi-drachm; B.M.C. 42ff, *poor*. ANACTORIUM. Stater, sym. omphalos; B.M.C. 'Corinth', No. 42ff, *fine*. BOEOTIA, THEBES. B.C. 426-387. Stater; B.M.C. 74, *ex Lucerne Sale 1926, lot 1370, fine and well-spread*. 4
- 5 0 0 1554 Small coins of Chalcis; Histiaea; Corinth; Sicyon; Achaean League. Stater of Corinth, B.C. 500-450, and Elis Hemi-drachm, B.C. 362-312; B.M.C. 83, *ex Lugano Sale, April 1927, lot 1550. The last very fine, but edge chipped; the others very good to fine*. 7
- 15 0 0 1555* PELÓPONNESUS. ELIS. OLYMPIA. B.C. 363-323. Stater, F—A, head of Hera r., hair wavy, the back portion turned up over the back of the stephanos, which is decorated with two palmettes and a lily between them; single pendant earring; *rev.* eagle standing r., head raised, wings closed; in front of l. foot, Δ ; all within wreath of wild olive. Seltman 322. 186.8 grs. *Very fine for the coin*. 1
- 34 0 0 1556* Another. Head of Hera r.; hair waved, one lock on cheek; stephanos inscribed $\Phi\Lambda\Lambda\epsilon\iota\omega\text{N}$; triple pendant earring with rose in centre; necklace of pearls; *rev.*, eagle to l., head to r.; wings open, standing on oval object (shield?), within wreath of wild olive; all in shallow circular incuse, F in field to l. 185.4 grs. *Ex Sir H. Weber Collection, No. 4074; Seltman, pg. 99, No. 353c (this coin). Very fine, well-centred, a small test-mark on one wing*. 1
- 5 10 0 1557 EGYPT. PTOLEMAIC KINGS. PTOLEMY I Soter). B.C. 323-285. Tetradrachm of Period II, B.C. 305-285; head of Alexander the Great in elephant-skin to r.; *rev.* $\text{A}\Lambda\epsilon\Xi\text{A}\text{N}\text{-}\Delta\text{P}\text{O}\text{Y}$, archaistic figure of Athena Promachos to r.; in field to r., eagle, with closed wings standing to r.; in field, l. and r., two monos.; B.M.C. 24; Svor. p. 28, No. 124, Pl. V, 10 and 11, *very fine*. PTOLEMY II, B.C. 285-246. Tetradrachm, head of Ptolemy Soter to r., diad., and wearing aegis; *rev.* $\text{P}\text{T}\text{O}\text{L}\text{E}\text{M}\text{A}\text{I}\text{O}\text{Y}\ \text{B}\text{A}\text{S}\text{I}\text{L}\text{A}\text{E}\text{O}\Sigma$, eagle to l., on fulmen; in field to l., Σ and shield; in field to r., mono; Svor. p. 83, No. 552, Pl. XIV, 6, *very fine, but small chip from edge*. 2

Lot

1558	Varied Greek bronze of Acarnania (2); Boeotia (1); Attica (2); Aegina (1); Sicyon (2); Achaia (3); Messenia (2); Pontus (2); Bithynia (1); Mysia (3); Aeolis (1); Ionia (10); Ptolemaic (1); and three false silver pieces of Neapolis; Metapontum and Ph. II of Macedon. <i>The bronze very good, a few fine.</i>	6	0	0	34
------	--	---	---	---	----

CABINETS

1558a	A fine mahogany cabinet by TURTON, 3ft. 7ins. wide, 5ft. 9ins. high, 2ft. 2ins. deep (overall); the upper part is fitted in two tiers with a total of 136 trays, pierced to hold 504 coins of 1in. diam., 9,432 of 1½in. diam., and 96 of 1¾in. diam; each tray with brass name holder; enclosed by two panel doors; the lower part fitted four drawers and two cupboards; enclosed by two panel doors.	125	0	0	1
1558b	A mahogany cabinet by Baldwin & Son, 14½ins. wide, 15ins. high, 12ins. deep, fitted 25 trays, double-pierced to hold 1382 coins of 1in. to 2ins. diameter, two panel doors, lock and key	29	0	0	1
1558c	A mahogany cabinet by Baldwin & Son, 15½ins. wide, 14ins. high, 13ins. deep, fitted 25 trays, double-pierced to hold 1,419 coins of between 1in. and 1¾in. diameter, each tray fitted with brass name holder; two panel doors, lock and key.	29	0	0	1
1558d	A mahogany cabinet by Turton, 11ins. wide, 7ins. high, 10ins. deep, fitted twelve trays, double-pierced to hold 240 coins of 1½in. diameter, fall front, rising top, lock and key.	6	10	0	1
1558e	A mahogany cabinet by Turton, 12ins. wide, 4½ins. high, 10½ins. deep, fitted six drop-in trays, pierced to hold 270 coins of 1in. to 1½in. diameter, fall front, rising top.	5	0	0	1
1558f	A mahogany cabinet by Lincoln, 12ins. wide, 6½ins. high, 10½ins. fitted, nine drop-in trays, pierced to hold 567 coins of 1in. diameter, fall front, rising top.	7	0	0	1

END OF SALE.



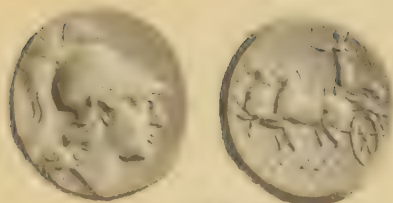
Periodical Sales

POSTAGE STAMPS,
ANTIQUÉ CHINA, SILVER PLATE, &c.
OIL PAINTINGS AND WATER COLOURS.
COLOURED PRINTS, ENGRAVINGS, &c.
COINS, WAR MEDALS AND DECORATIONS.
OLD CHINESE AND JAPANESE CURIOS, &c.

Terms: 12½ per cent.; minimum charge on any lot 5/-.

Entries can now be received.





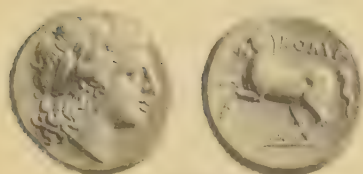
1378



1381



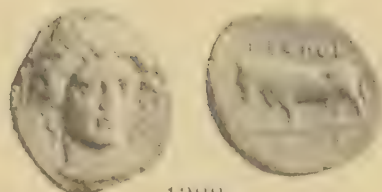
1382



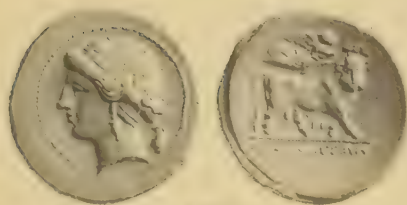
1383



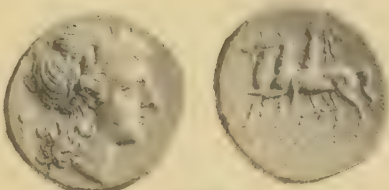
1386



1388



1390



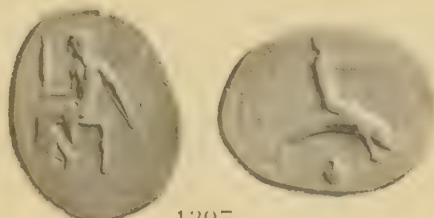
1392



1393



1395



1397



1396



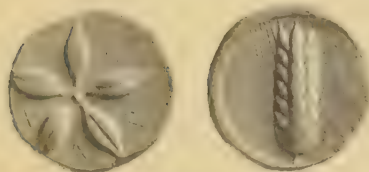
1409



1410



1411



1413



1414



1416



1417



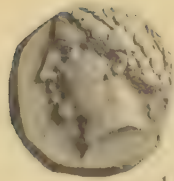
1418



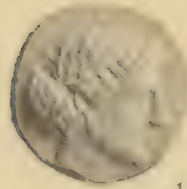
1420



1121



1122



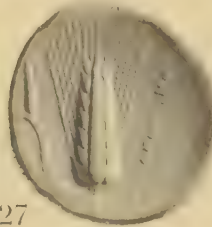
1124



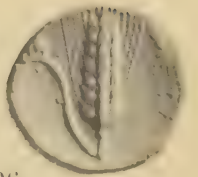
1125



1127



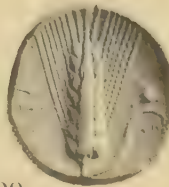
1126



1128



1129



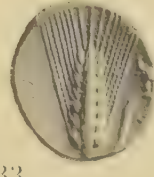
1130



1132



1133



1134



1140



1135



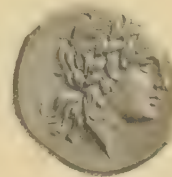
1141



1142



1143



1144



1147

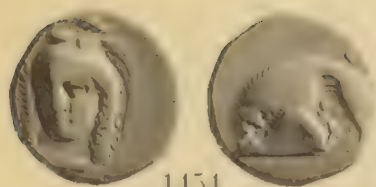


1148



1149

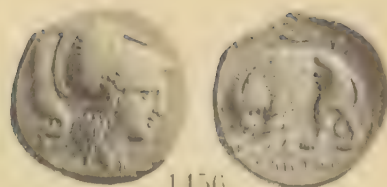




1454



1455



1456



1457



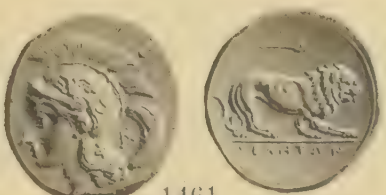
1458



1459



1460



1461



1462



1463



1464



1465



1466



1467



1468



1469



1470



1471



1472



1473



1474



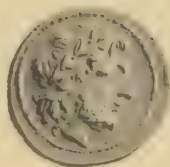
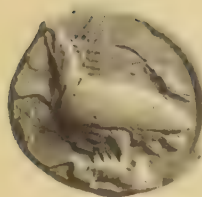
1182



1187



1183



1188



1191



1190



1492



1493



1191



1195



1497



1500



1501



1503



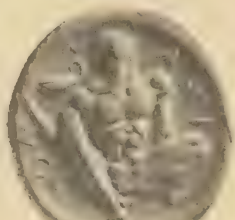
1505



1504



1508



1509



1510

1511

1512

1513

1516



1517

1518

1523

1519

1520



1521

1522

1524



1525

1528

1526



1530

1529

1531



1533

1532

1534



1535

1536

1541

1537

1538



1543

1547

1545

1551

1550



1552

1555

1556



PRICED CATALOGUES

of Coins and Medals.

*A*FTER each sale these catalogues are issued with the prices realised printed in the margin opposite each lot, thus giving at a glance a reliable guide to values.

The final test of value must always be auction prices rather than the figures given in books of reference, for changing times and fashions soon render the latter obsolete and misleading.

On the average we issue twelve Coin and Medal catalogues a year, some of which are usually of sales of important collections. The **priced catalogues** are posted to subscribers as soon as ready, usually about a week after the date of sale and the subscription is

THIRTY SHILLINGS per annum

Glendining & Co., Limited

CONDUCT AUCTION SALES OF

SILVER JEWELLERY

ANTIQUE FURNITURE VIOLINS

SELL

War and Commemorative Medals = Coins
Postage Stamps = Fine Art = etc.
at a charge of 12½%

WEEKLY THROUGHOUT THE SEASON

—◆—

Lots to be included in these Sales
should be sent in as soon as possible
Minimum Charge for any lot 5/-

—◆—

PROMPT SETTLEMENTS

GLENDINING & CO., LTD.

7 BLENHEIM STREET, NEW BOND STREET, W.1

Printed by PARDY & SON (Printers), LTD., The Triangle, Bournemouth.